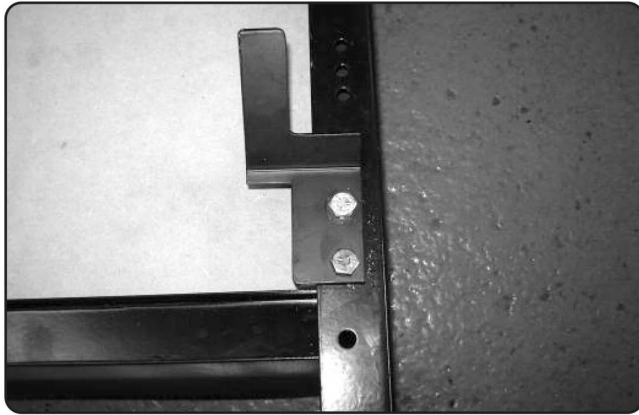


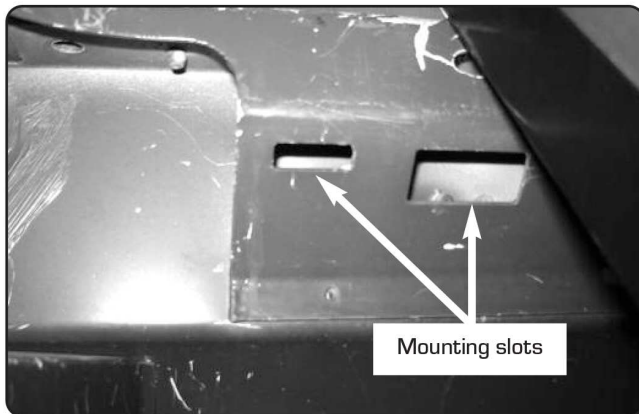
Land Rover Defender Series

Rear 2 Man Bench Seats

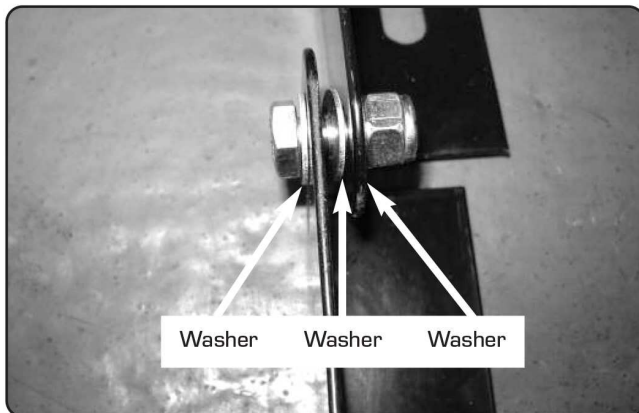
FITTING INSTRUCTIONS



Loosely fix brackets to the back of the seat frame using nuts and bolts only.

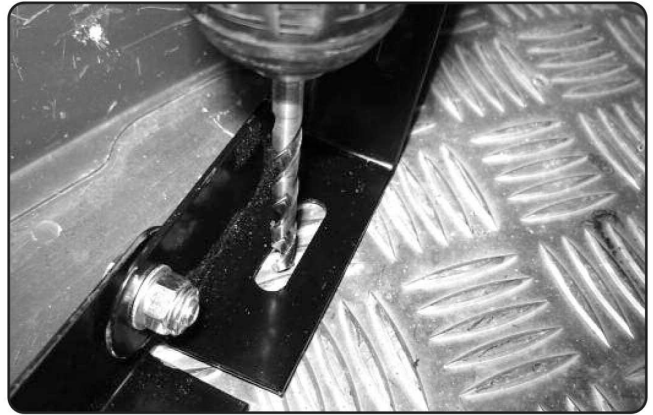


Check the brackets align with the mounting slots on the vehicle, then tighten the bolts.



Assemble the base frame to the back frame using nut/bolt and three washers as shown in picture.

Tighten up the bolts until the base just moves.

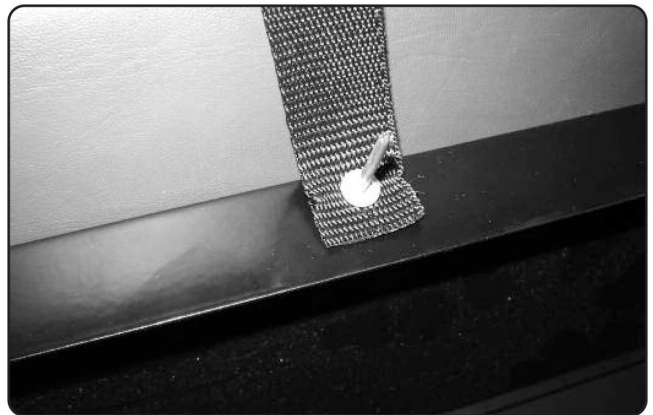


NOTE - Beware of electric cables when drilling holes

Hook seat back into mounting points at the top then slide the base backwards until the baseplate is flat with the vehicle body.

Drill a 6.5mm hole at each end and bolt down the seat assembly to the vehicle.

Bolt down with nuts/bolts provided.



Using a small screwdriver make a hole in the end of the check strap and rivet the strap to the centre of the base frame.

Tools required -

- > Spanners
- > Poprivet gun
- > 6.5mm drill bit
- > Small screwdriver