

DEFENDER

INTERNAL TRIM KIT

ILLUSTRATED FITTING MANUAL



You will need:

- General workshop tools
- Cleaning sponge or cloth
- Drill
- Angle grinder

DEFENDER INTERNAL TRIM KIT

Thank you for purchasing the Masai Defender Internal Trim Kit. Please read these instructions carefully before commencing work.

If you have a panel van and wish to remove the apertures, you may find our online video. See link here: <https://bit.ly/2FrB5Bz> (www.masai4x4.com). Make sure you have all the tools and other equipment ready before you start, including a table near your vehicle.

Please follow widely accepted safety precautions.

Your kit includes:

- Side panels - off and near side
- Rear quarter panels
- 12x long screws
- 4x short screws
- 2x rubber seals



1. Remove the bench seats and any internal uprights if your vehicle has them. Alternatively, if you would like to keep the uprights, cut the side trims so that they will fit over them.



2. Offer each side trim up to your Defender and mark out the seat belt aperture points. Carefully drill out the points.



3. File the trim panels to remove any burrs or rough edges, taking care not to damage the material.



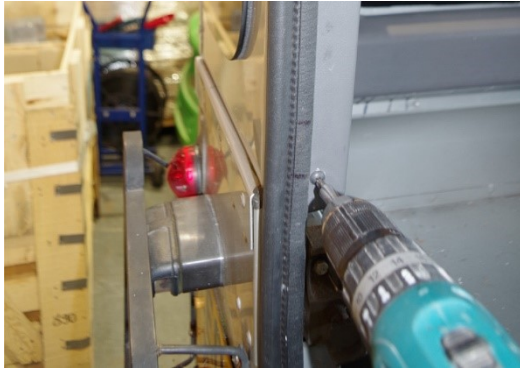
4. Offer all four trim panels to their respective surfaces. If the trim does not quite fit or is obstructed by anything on the interior of the vehicle, carefully file off any excess material with an angle grinder until the panel fits comfortably.



5. Set the first side panel in place and, once you are happy that it fits, reattach the seat belt bracket to hold it in place. Repeat this process on the other side of the vehicle. Slide the rubber seals in to finish off the edges of the trims. (To the right of the trim in the photo above.)



6. Set the first rear quarter panel in place and drill three small holes, as shown in the image above. Repeat this process on the other side of the vehicle.



7. Fix the rear quarter panels in place with three long screws using the holes drilled in the previous step.



8. Using three long screws in the locations shown in the image above, fix each side panel in place. Take care not to over tighten these screws as the plastic could crack.



9. Secure the front edge of each side panel using two shorter screws—one in the top and one in the bottom.



10. Be sure to space the screws evenly for a neater result. The screws in the front edge of your side panel should look similar to those shown in the image above.

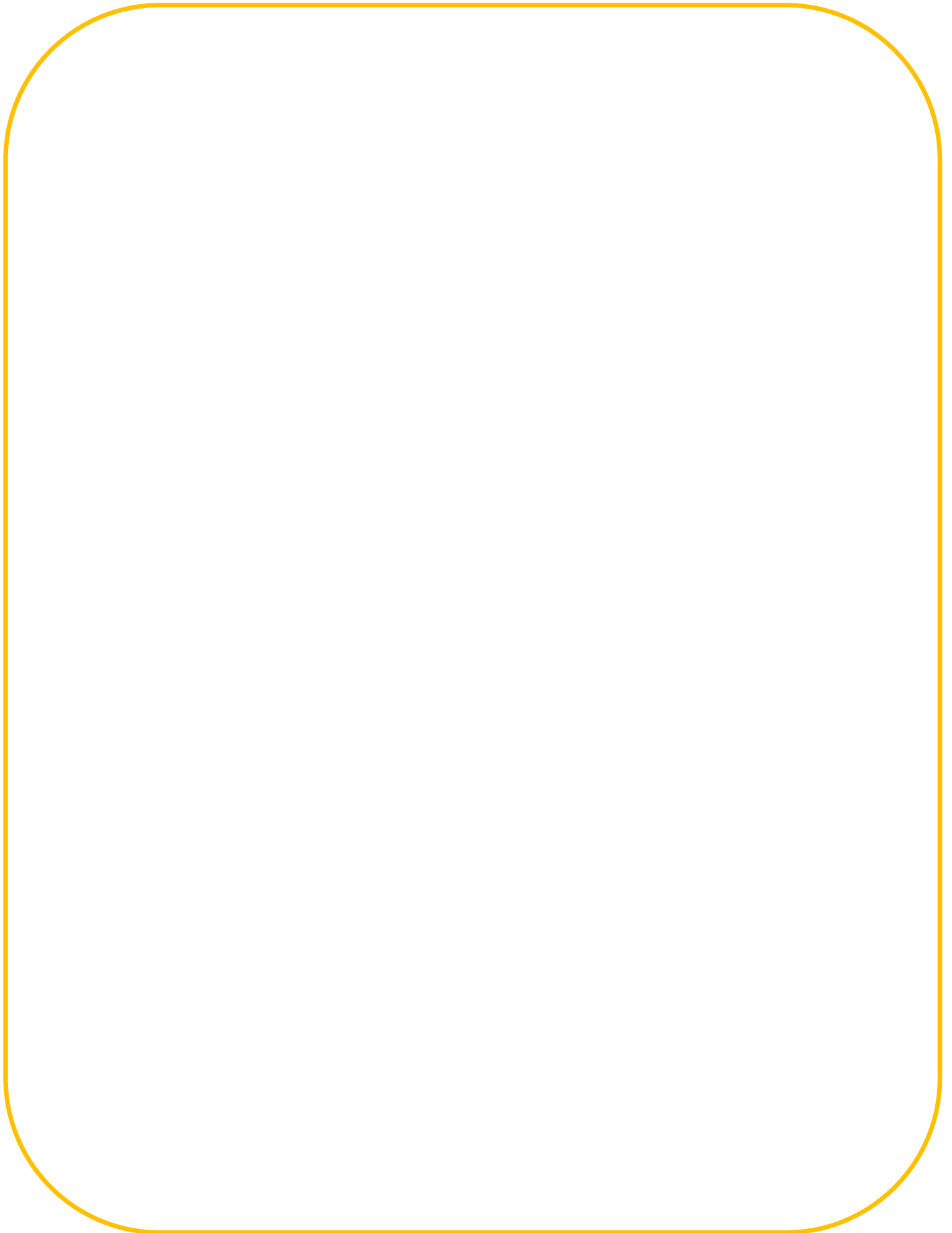


11. Fix the rear quarter panels to the side panels using two short screws on each side. Be mindful that you do not exert excessive pressure on the plastic.



12. Your internal trim kit is now fitted! We think our internal trim kits look excellent paired with our interior strip lighting kits, shown on the image above. See our website for more details.

PERSONAL NOTES



PERSONAL NOTES

A large, empty rounded rectangular box with a yellow border, intended for personal notes. The box is centered on the page and occupies most of the vertical space below the header.

Customer Feedback

Your feedback is very important to us.

We would love to hear any suggestions or recommendations you may have about the Masai product range. If you have any feedback you think may help us improve the services or products we offer, then please use the details found on the reverse page of this booklet to contact us.

Thank you for choosing Masai.





Unit 5, Eastern Park, Eastern Avenue, Lichfield,
Staffordshire, WS13 7SY. United Kingdom.
Tel: +44(0)1543-254507 Fax: +44(0)1543-418665
Email: info@masai.co