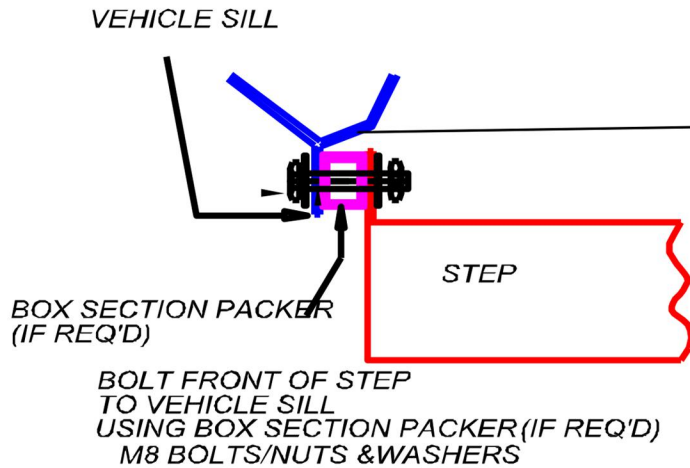
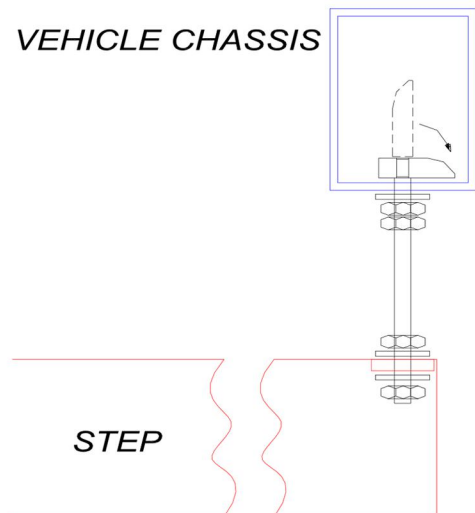


Masai Sliding Step Fitting Guide



MAYBE NECESSARY TO DRILL
Ø10 FIXING HOLE IN THE CHASSIS
ALTHOUGH PREFERRED METHOD
IS TO USE EXISTING CHASSIS HOLE



LOCATE CHASSIS HOLES
USING THE TOGGLE FIXINGS
SECURE THE REAR
OF THE STEP BY PLACING
THE TOGGLE THROUGH
THE CHASSIS HOLE AND ALLOWING
TOGGLE TO BRACE THE HOLE
NOW USING THE FIXINGS PROVIDED
3 x NUT
1 x LOCK NUT
3 x WASHER
SECURE THE STEP AS SHOWN.



Masai Sliding Step Maintenance Tips

Thank you for purchasing the Masai Sliding Step.

The Masai side sliding step is manufactured to a very high standard to provide a reliable service for its users. However like all mechanical moving items, it does require simple maintenance. We recommend the following :

1. All moving parts should be washed regularly by jet wash as it is exposed to heavy road conditions. This process should be done every 4 weeks on a regular basis.
2. All moving parts should be lubricated with silicon spray at least every 4 weeks especially in winter months.
3. It is recommended that the step is protected by mud guard/flaps if it is fitted near the front wheels of a vehicle.