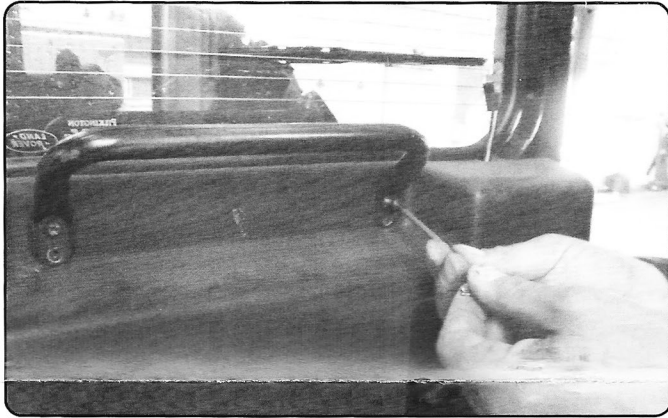


Rear Door Stay Conversion Kit

FITTING INSTRUCTIONS

Part Number -MA1203 &MA1204

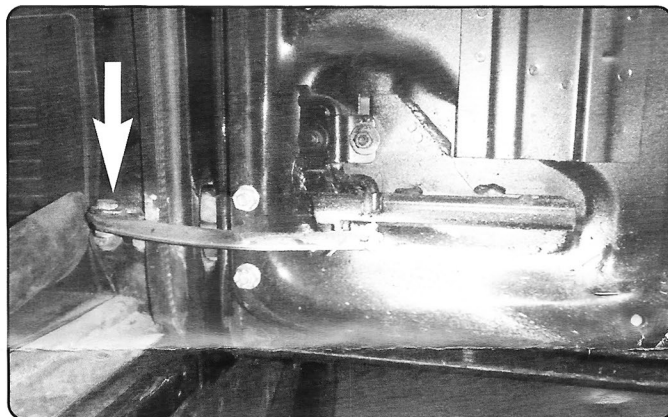
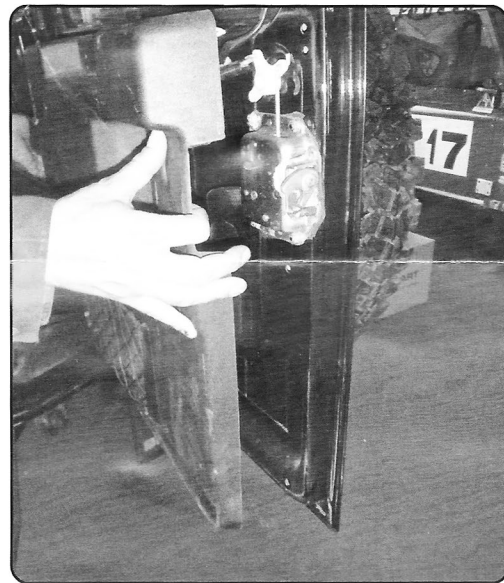
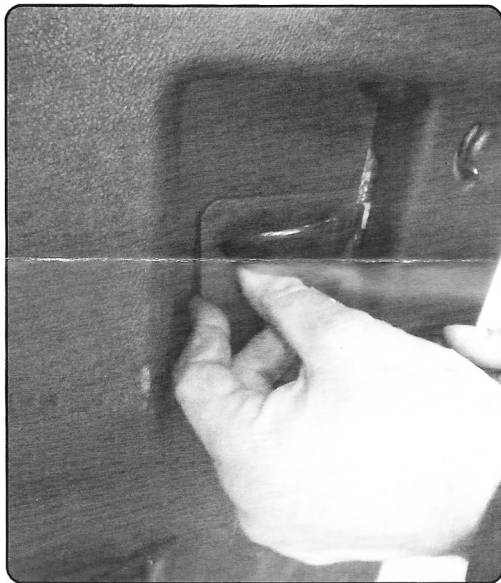


Defender - up to 2002

Undo the door stay pivot bolt. Remove the door handle, wiper motor cover and cable cover off the door then unscrew and remove the door card.

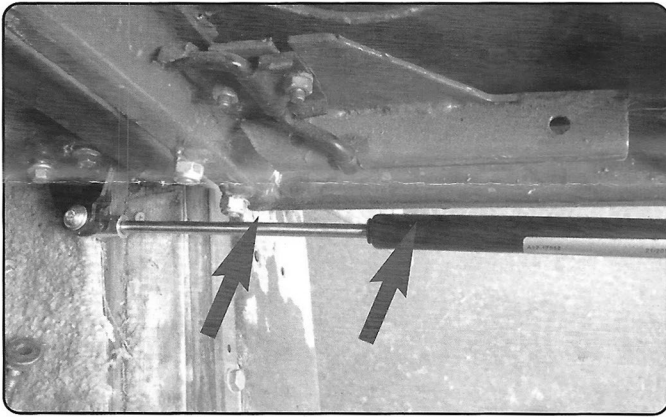
Defender - 2002 onwards

First remove the inner door handle. On post 2002 vehicles remove the plastic trim from behind the door lock then pop off the panel starting in one corner and working your way around.

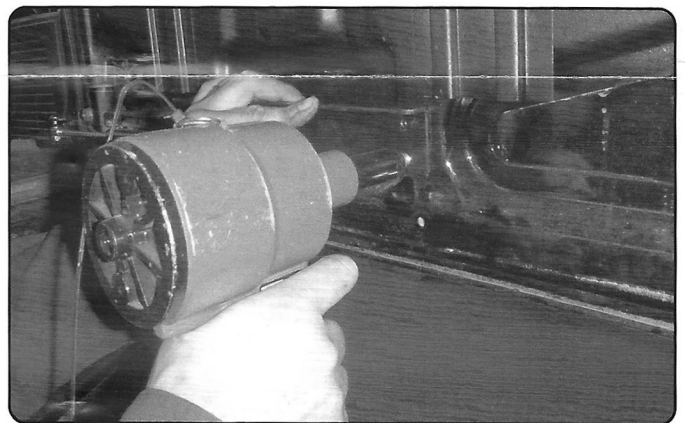
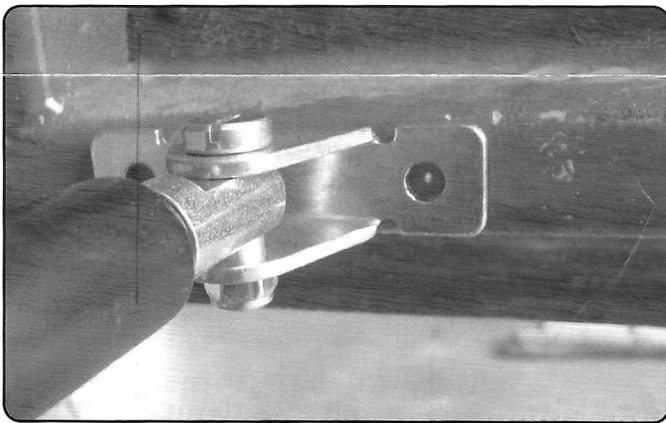


Undo pivot bolt and remove the door stay. Remove the pivot bracket on the inner wheel arch. Replace with the new bracket provided in the kit

FITTING INSTRUCTIONS - continued



Fit strut loosely to the new pivot bracket. Position the strut against the door and open or close the door until you get a clearance at this point allowing for clearance of the door card to fit on pre-2002 vehicles and so that the strut does not get damaged during operation on all ages of vehicles.



Mark the holes on the new mounting plate on the door. Measure the size of the pop rivets provided and select a suitable drill bit. Drill one hole at a time and rivet each one in turn as to ensure the bracket does not move.



On post 2002 vehicles refit the door card and handle. On pre-2002 vehicles you will have to trim the door card before refitting it. On pre-2002 vehicles reposition the door card into place and mark out and trim the area where the new bracket is fitted and cut out using a suitable tool. Position and refix the door card into place then the wiper motor cover and other covers and the door handle.

IMPORTANT

Always hold onto the door whilst opening or closing.