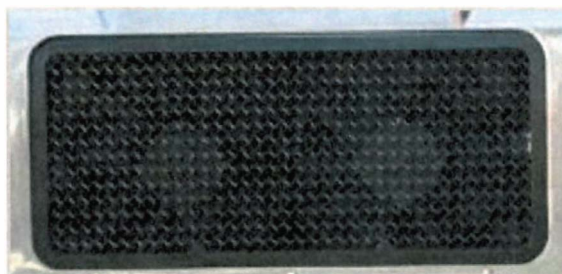


Landrover Defender Stainless Steel Sports Upper Grille

Kit Contents:

1 off	Upper Grille
4 off	6mm Washers
4 off	6mm Nyloc Nuts
2 off	Brackets
6 off	Hole Plug Buttons



Upper Mesh Grille Fitting Instructions

1. Firstly remove the existing moulding (the grille surround) from the vehicle.
2. Locate the grille into the moulding by slotting the brackets behind the aperture and so the studs locate in the holes and the grille sits in the recess (Fig 1 & 2).
3. Using the nuts & washers provided fasten the grille to the existing moulding starting with the 2 centre nuts first (fig 3).
4. Now the grille is securely in position tighten the end 2 brackets as shown in fig 4.
5. Grille assembly is now complete (fig 5).
6. Attach moulding back to vehicle.
7. Attach hole plug buttons in the 6 open holes on the moulding.

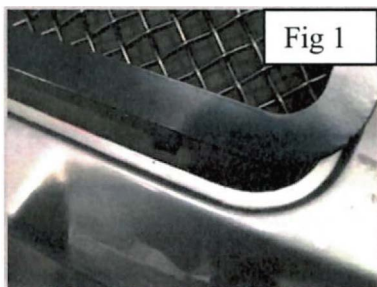


Fig 1

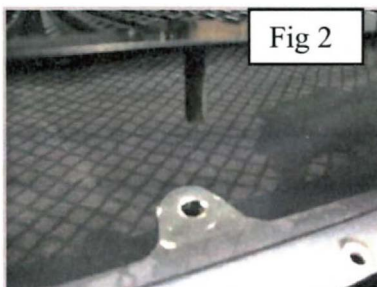


Fig 2

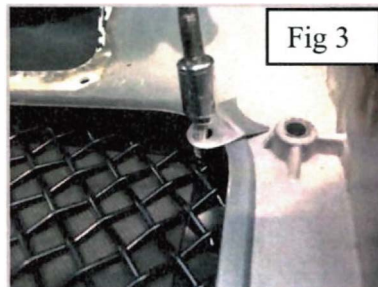


Fig 3

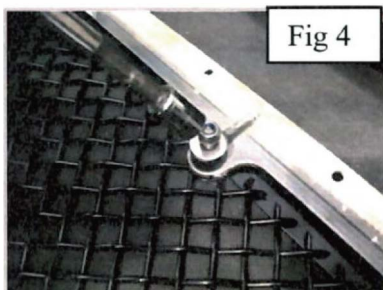


Fig 4

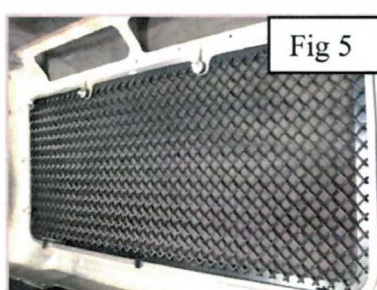


Fig 5



Fig 6